

# Why are Gas Powered Leaf Blowers So Bad

## Impact to machine operators and residents

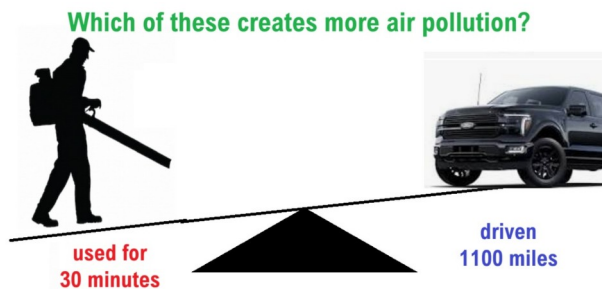


Noise from gas powered leaf blowers can reach up to 100 decibels, which is the equivalent to a plane taking off, exceeding levels recommended by EPA, OSHA and W.H.O.

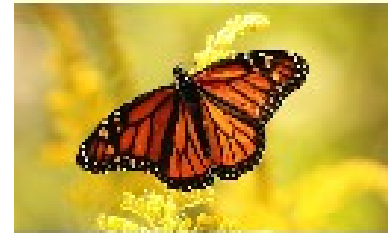
The noise, chemical emissions and the dust containing pollen, mold, animal feces, and chemicals from herbicides and pesticides contribute hearing loss, stress which is linked to heart disease, respiratory disease and cancer from the exhaust.

## Impact on air quality

Gas powered leaf blowers operate on wasteful and inefficient 2 stroke engines. Operating a gas-powered leaf blower for 1 hour emits as many hydrocarbons equivalent as driving 15 cars in your neighborhood for an hour.



## Impact on ecology



Allowing leaves to remain where they fall protects overwintering insects. Returning mulched leaves to garden beds act as fertilizer for plants and habitat for salamanders, snails, and toads.

## What is being done about it

The Media Borough Council took a first step in protecting children from the toxic effect of Gas Leaf Blowers by banning their use prior to 9 am during the school year. However, after 9 am, people and the environment are not safe from the pollutants.

*More needs to be done to ban the use of these machines completely.*



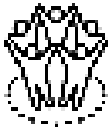
# Why are Gas Powered Leaf Blowers So Bad

## What you can do about it.



### Learn

about the dangers of the 2 stroke gasoline engines that power these devices. Check out our web page via the QR code below for more information.



### In the community

**Talk** about the dangers of Gas Leaf Blowers

- with Media Borough Council
- with your friends and neighbors,
- at your children's schools,
- with your minister, imam, priest or rabbi.



### At home

**You can**

- replace part of your lawn with a native plants,
- leave a light layer leaves on your lawn,
- rake the leaves,
- switch to an electric or battery operated leaf blower,
- have your contractor switch to an electric or battery operated leaf blowers.



transition town  
GREATER MEDIA

